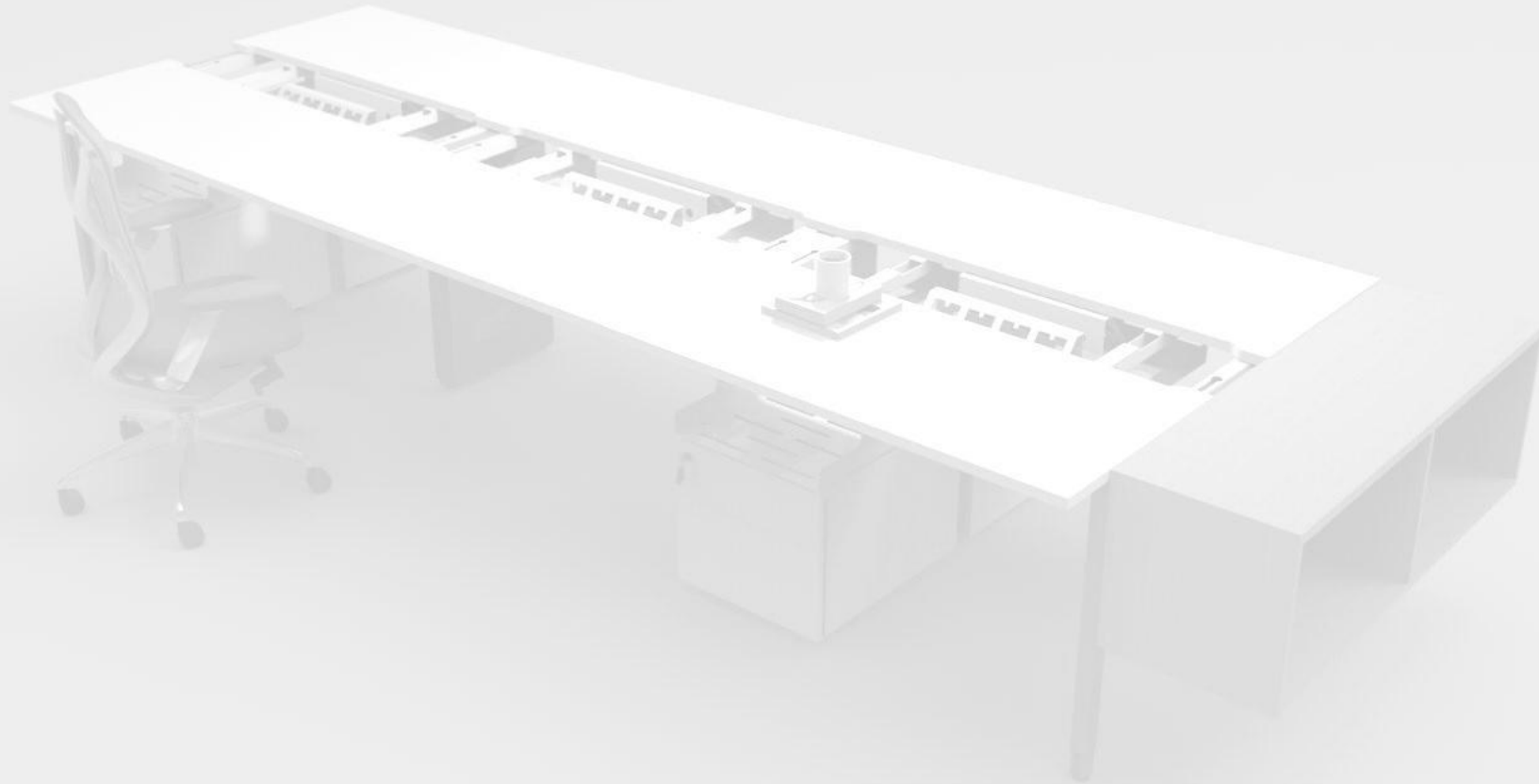


Development background - 40

開發背景

市場考察

- 辦公室租金水漲船高，辦公台尺寸越來越小？
- 國內經濟環境不穩定，終端市場對辦公家具的需求開始改變？
- 風格簡潔現代，組合靈活多變，外觀經典，生命力持久？
- 滿足現代各種主流辦公環境，功能簡單實用？



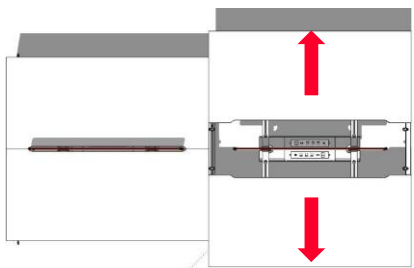
舍去繁華 方得升華

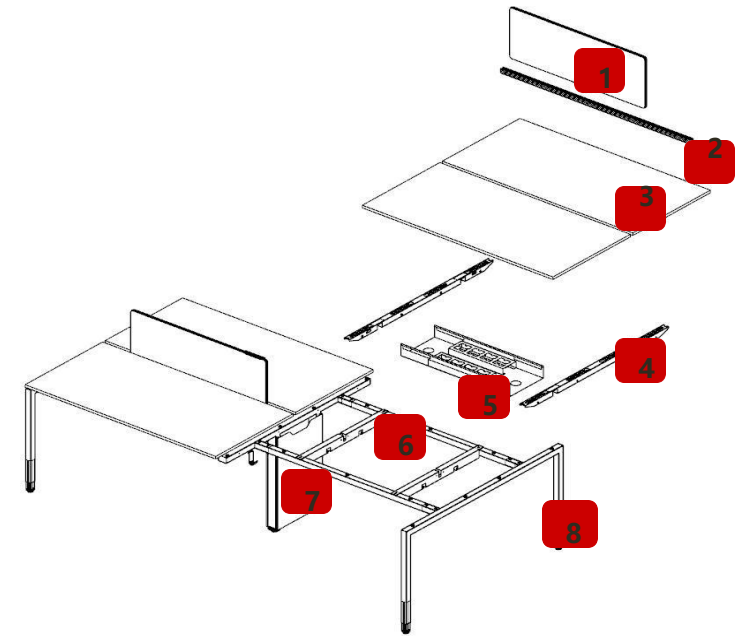
- 檯面採用推拉式，增大工作臺面，減少綫蓋，節約成本
- 台架採用橫梁+縱梁的方式，提高產品穩定性
- 台腳採用升降結構，產品更有設計感，跟周邊產品更系統，產品家族化

pure--40

方寸之間 運籌帷幄

HIQ

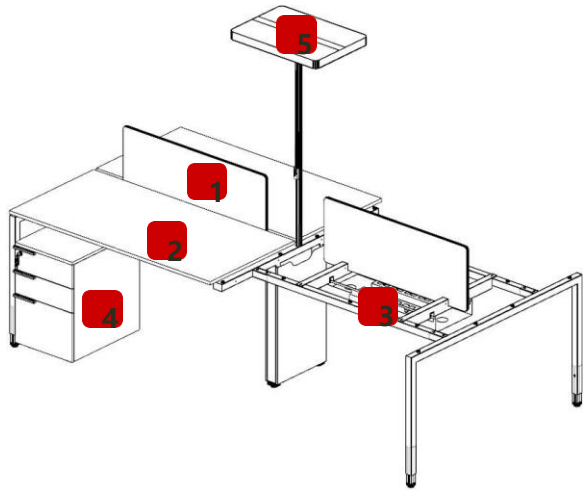




1. 雙邊屏風
2. 屏風功能槽
3. 檯面板
4. 滑動托臂
5. 大容量綫槽
6. 縱梁：橫梁
7. 上綫腳
8. 側邊腳

pure--40

常規工作站組成元素

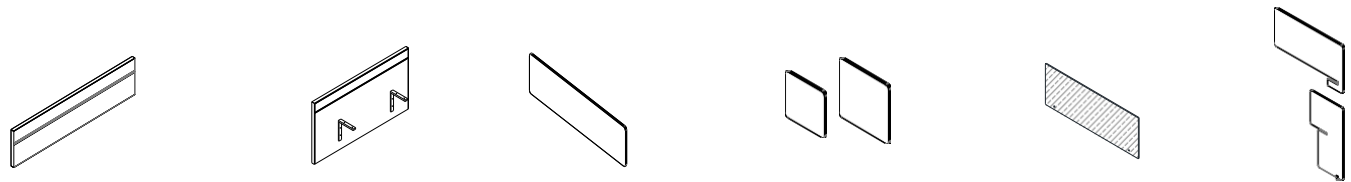


1. 雙邊屏風 (玻璃/無框 / 鋁框/無框小塊屏風)
2. Pure系統工作站 (直型 / 120度型)
3. 大容量走線槽 (雙面 / 單面/獨立)
4. 活動櫃 (側拉手/面拉手 / 二抽+主機托)
5. 檯面燈 (圓管/方管)

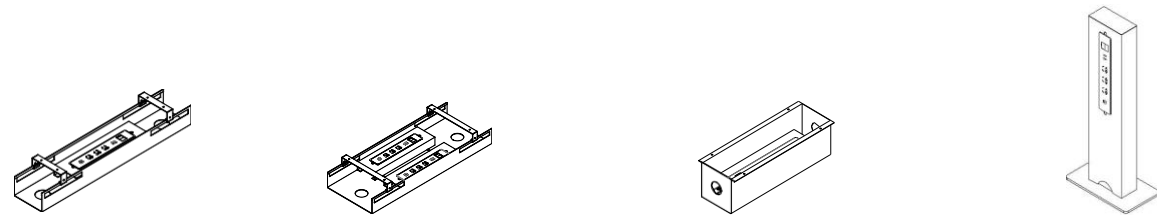


常規工作站組成元素

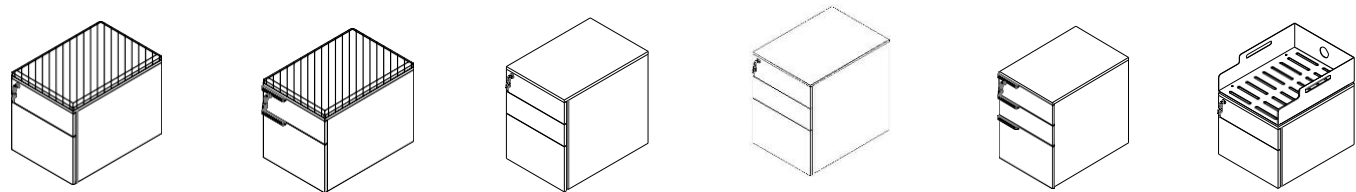
雙邊屏風 (玻璃/無框/鋁框/無框小塊屏風)



大容量走綫槽 (雙面/單面/獨立)

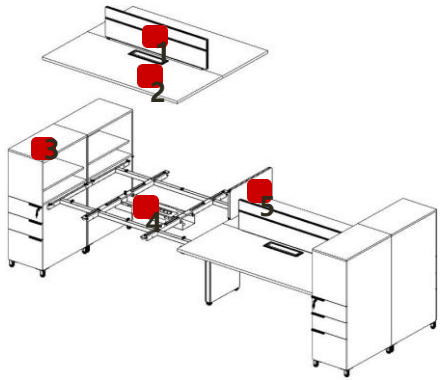


活動櫃 (側拉手/面拉手/二抽+主機托)



pure--40

常規工作站組成元素

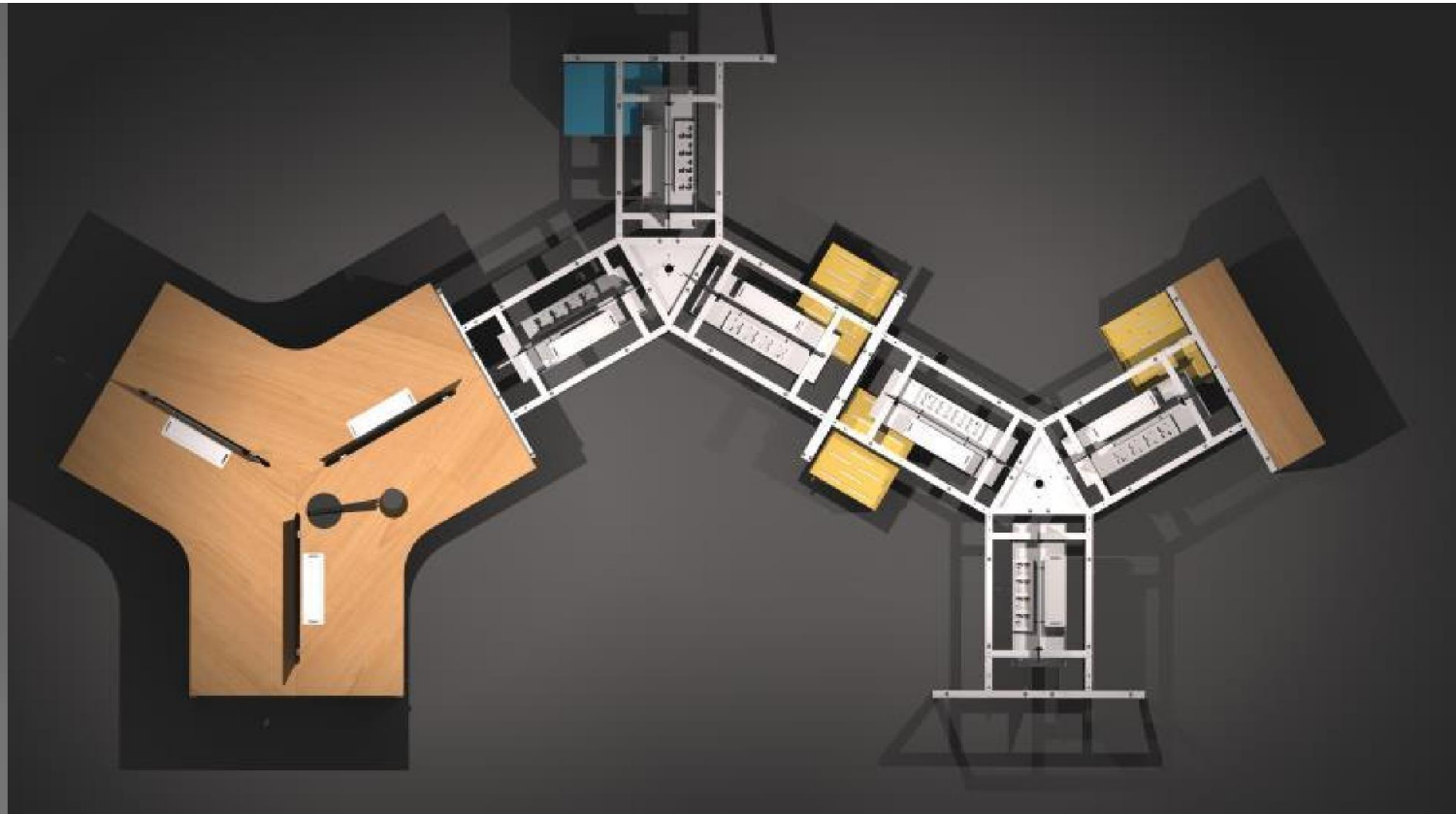


1. 雙邊屏風 (玻璃/無框/
鋁框/無框小塊屏風)
2. 檯面板 (含鋁合金翻綫
蓋)
3. 側邊櫃 (半掩門+空格/三
抽+空格/全掩門)
4. 大容量走綫槽 (雙面/單
面/獨立)
5. 插入式側屏風



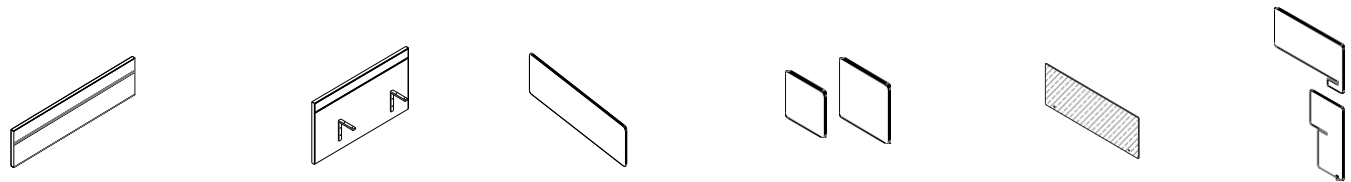
pure--40

產品延伸組合

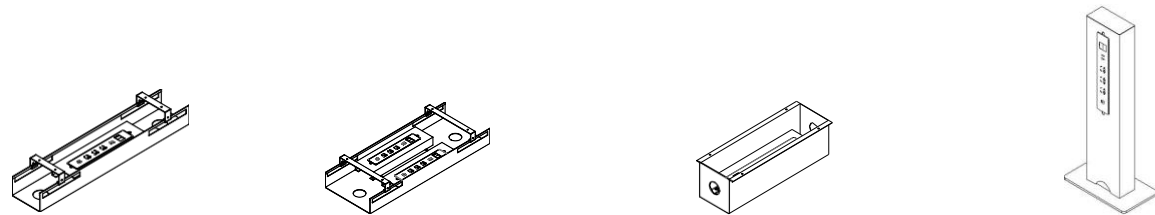


常規工作站組成元素

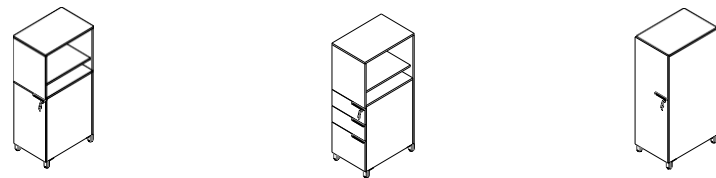
雙邊屏風 (玻璃/無框/鋁框/無框小塊屏風)



大容量走綫槽 (雙面/單面/獨立)



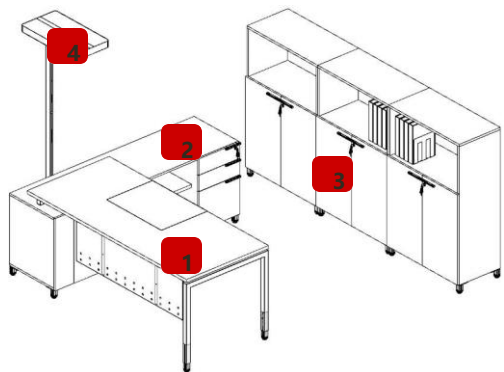
側邊櫃 (半高掩門+空格/三抽櫃+空格/全掩門櫃)



pure--40

HIQ

常規主管組成元素



1. 辦公主台
2. 側櫃
3. 背櫃
4. 落地燈



pure--40

常規主管組成元素

不仅仅是家具，更是一部设备，以满足使用人员的使用需求

MORE THAN FURNITURE PIECES, SYSTEM FURNITURE IS AN OFFICE FACILITY TO ENABLE FUNCTIONS, PRODUCTIVITY AND EFFICIENCY.



pure--40

常規主管組成元素

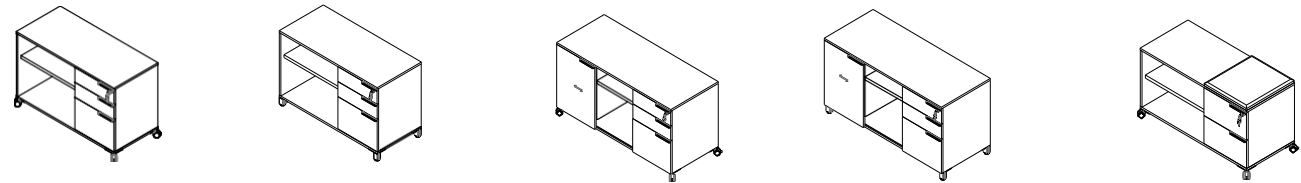


HIQ

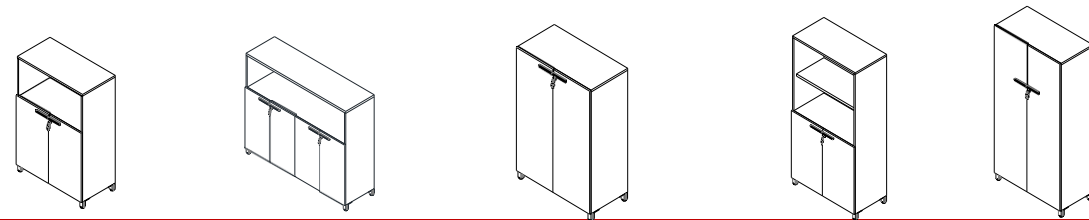


主管台組成元素

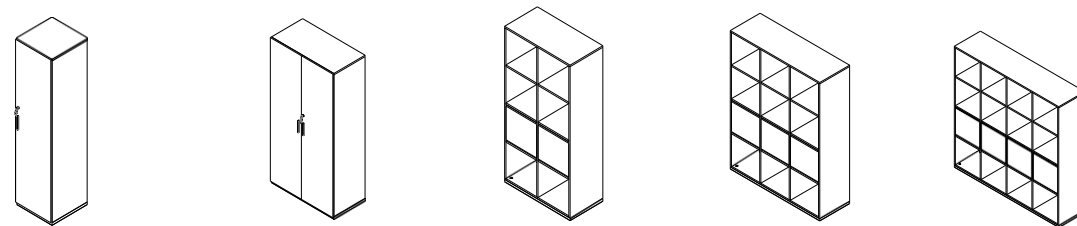
側櫃 (兩抽+主機/三抽+主機/軟包/活動, 固定)



背櫃 (雙掩門+空格/雙掩門)



半高櫃 (衣櫃/落地雙掩門櫃/空格櫃)





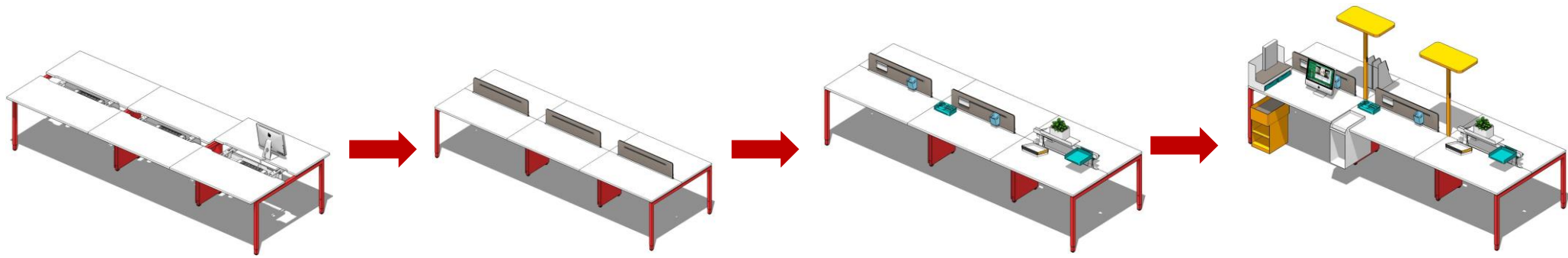


Block stacking is flexible and changeable
塊狀疊加 靈活多變



Family design has rich functions

家族化設計 功能豐富



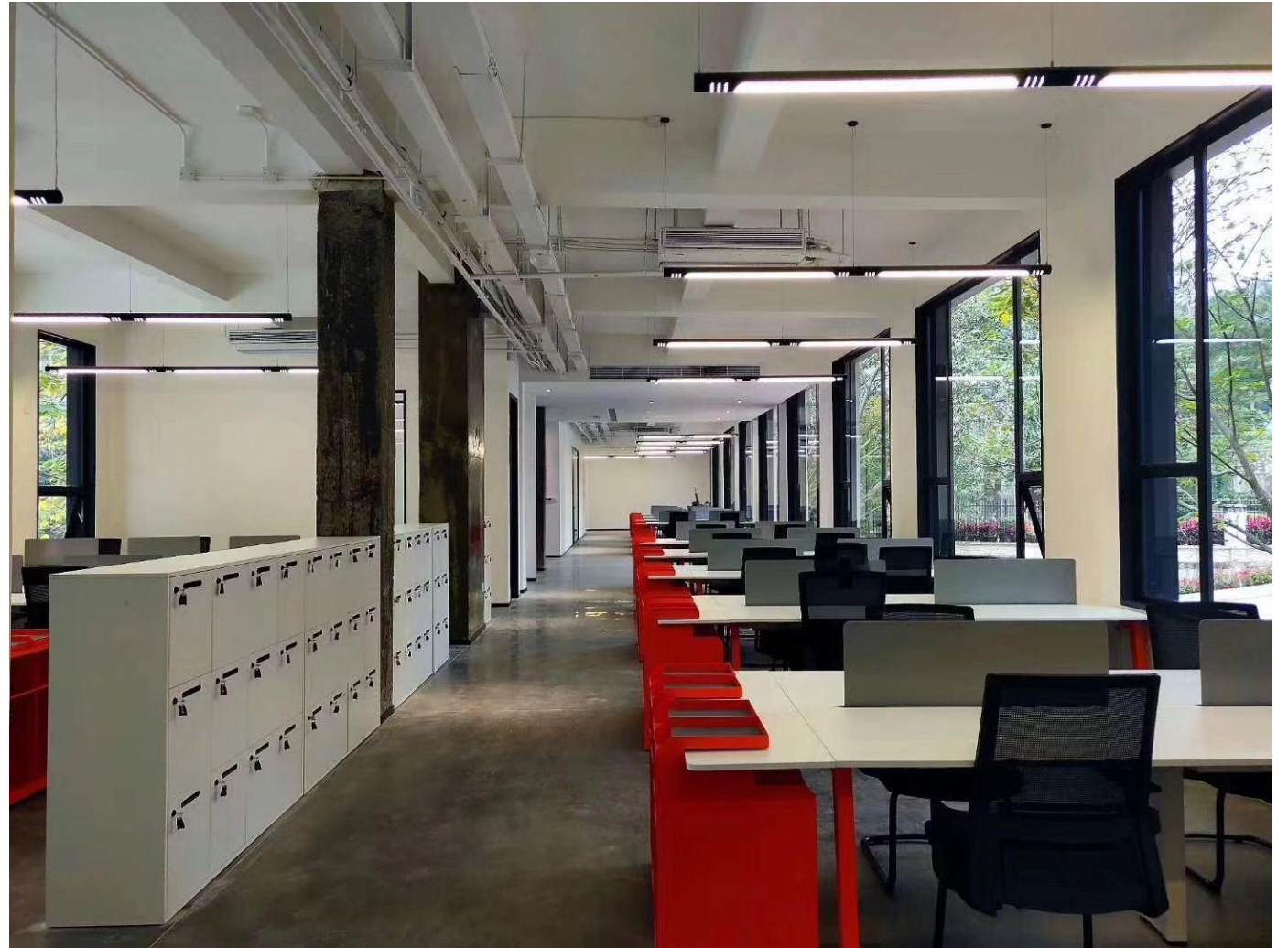
基本架 (檯面可推拉取電)

經典版 (增加屏風效果)

中配版 (增加日常辦公
配件筆盒/書托/花槽)

高配版 (增加屏風燈/掛式資
料架/活動書架/桌面資料盒)

Design is to meet real needs
設計就是滿足真正的需求





Block stacking is flexible and changeable

塊狀疊加 靈活多變



pure--40

工作站組合樣式

600/700

1800
1600
1500
1400

800/900

2000
1800
1600
1400

1000/
1200

2400
2200
2000
1800



plus

DESK SYSTEMS

獨立台系統



1

WE CREATE
FURNITURE THAT
ESTABLISHES
DISTINCT VALUES
WITH A CLEAR
STATEMENT AND
SUPREME
FUNCTIONALITY
AND DESIGN.

工作空間

16

辦公室&









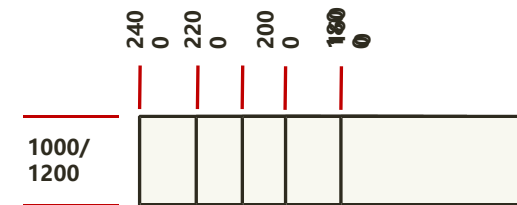
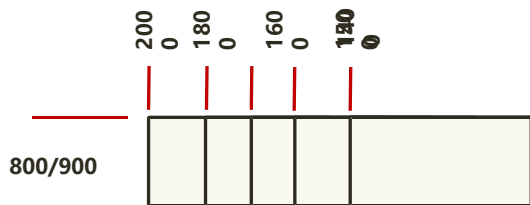
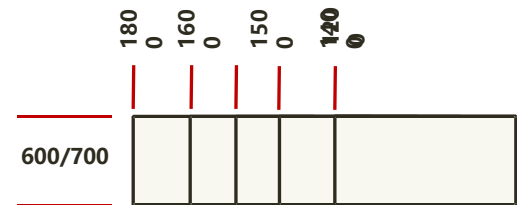
會議空間

27

會議室&



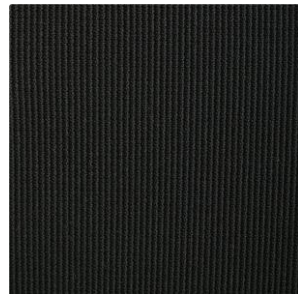
工作站組合樣式



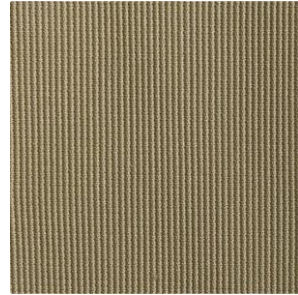
Material color

產品主材顏色

Fabric (布藝)



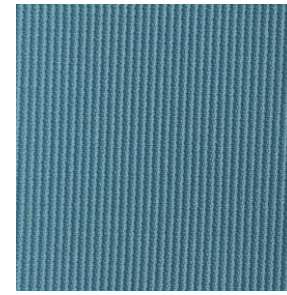
MK48-01A



MK48-02A



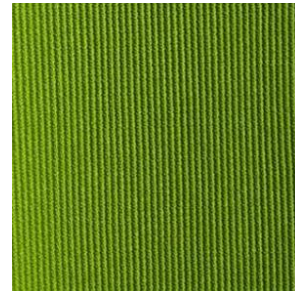
MK48-03A



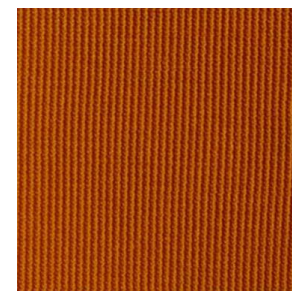
MK48-04A



MK48-05A



MK48-06A



MK48-07A

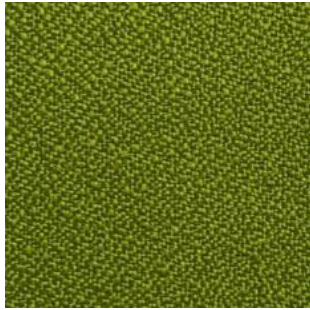


MK48-08A

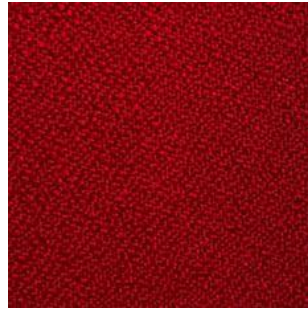
Material color

產品主材顏色

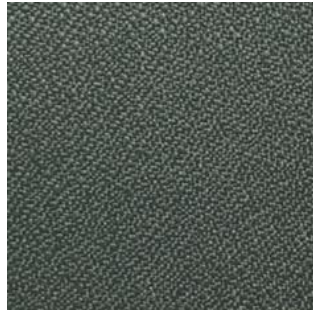
Fabric (布藝)



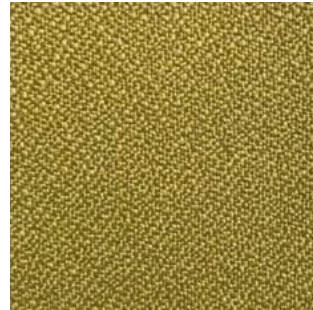
MK-01G



MK-02G



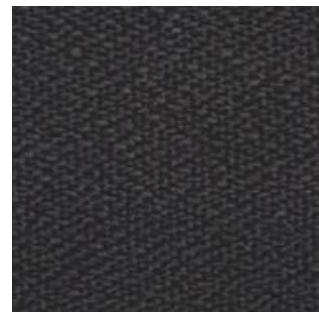
MK-03G



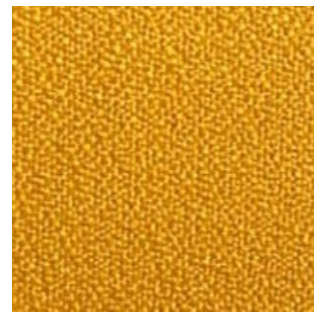
MK-04G



MK-05G



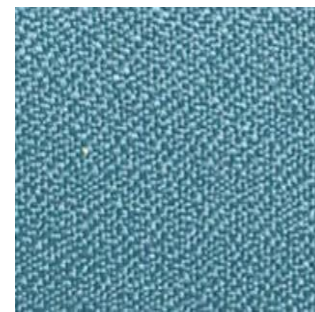
MK-06G



MK-07G



MK-08G



MK-09G



MK-10G

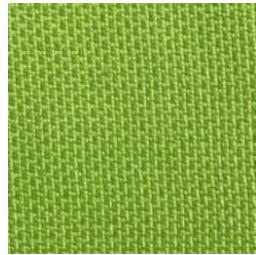
Material color

產品主材顏色

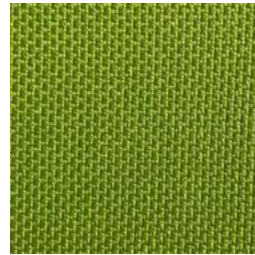
Fabric (布藝)



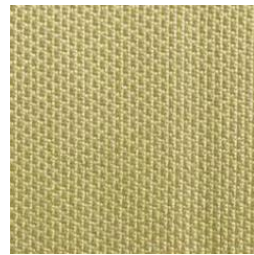
MK329-04



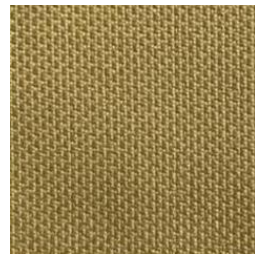
MK329-05



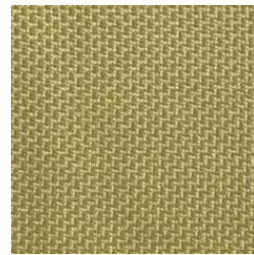
MK329-06



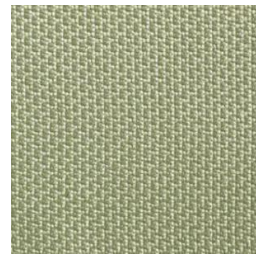
MK329-07



MK329-08



MK329-09



MK329-10



MK329-11



MK329-12



MK329-13



MK329-14



MK329-15



MK329-16



MK329-17

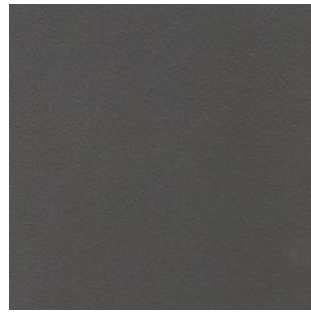
Material color

產品主材顏色

Wood (木紋)



MFC-001 暖白



MFC-002 鐵灰



MFC-003 香檳灰



MFC-004 淺櫻桃



MFC-005 金絲櫻桃



MFC-006 淺樺理



MFC-007 橡木



MFC-008 進口雪楓



MFC-009 灰橡木



MFC-010 胡桃木

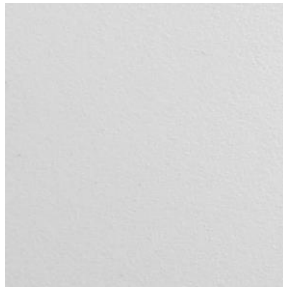
Material color

產品主材顏色

Metal (金屬)



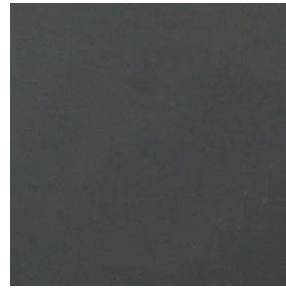
MET-001 啞光白



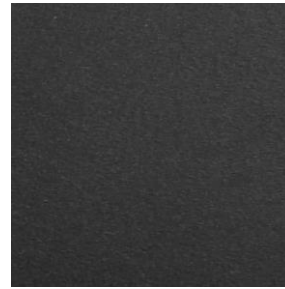
MET-002 砂紋白



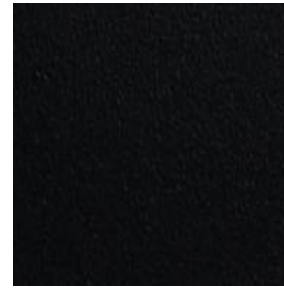
MET-003 閃銀灰



MET-004 碳灰



MET-005 碳黑



MET-006 磨砂黑



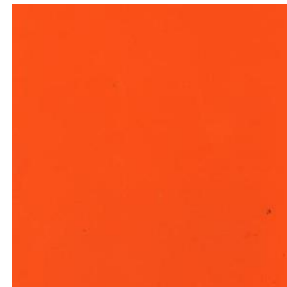
MET-007 香檳



MET-008 冰藍



MET-009 薑黃



MET-010 橙紅



MET-011 中國紅



MET-012 蘋果綠

HIQ Group Limited



Unit 2209, Kodak House II, 39 Healthy Street East, North Point, Hong Kong

Tel: (852) 2575 8966, Fax: (852) 2575 8633

Website: <http://www.hiq-group.com>