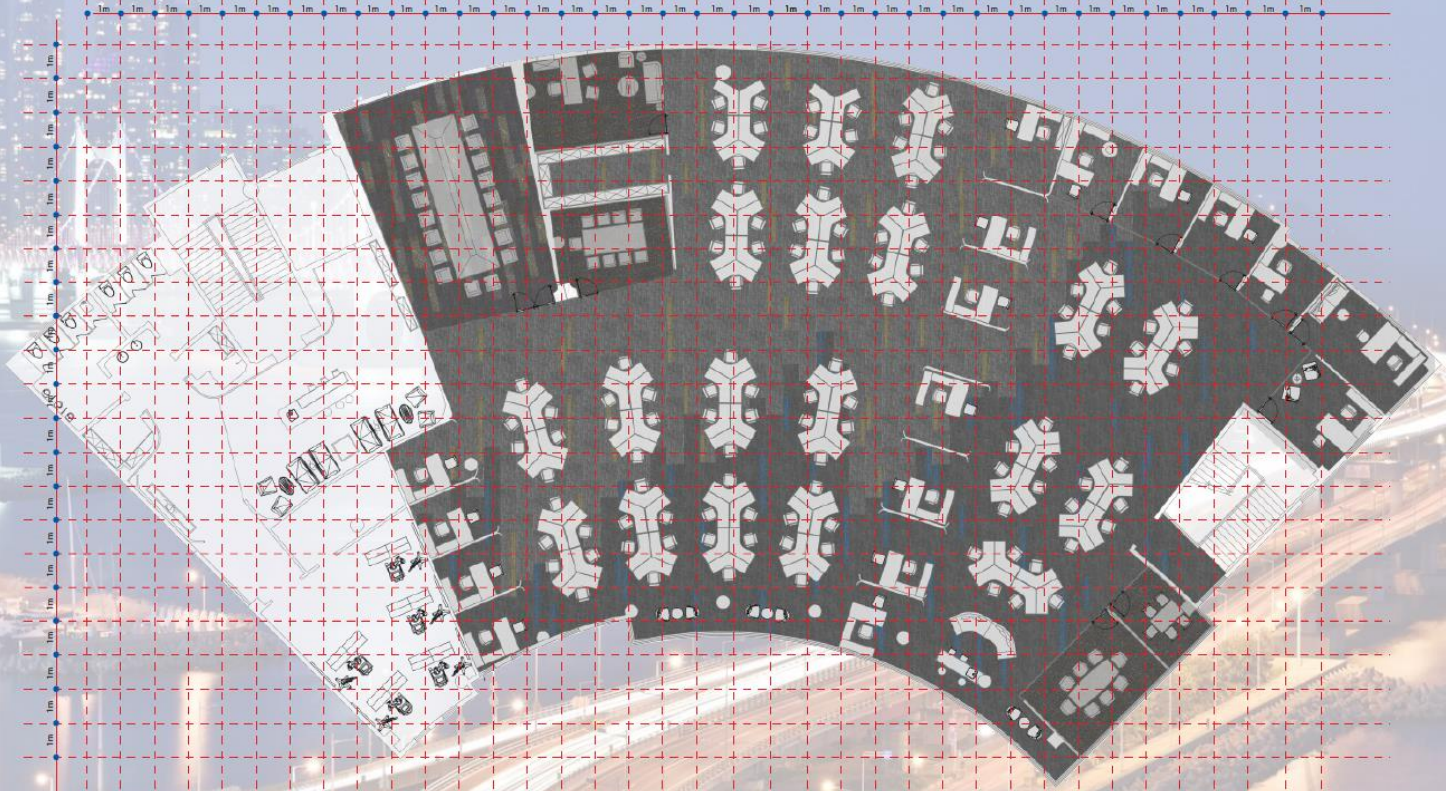




# City Contours

The used of same colour but with different motif can bring up the space more cheerful with the right arrangement.



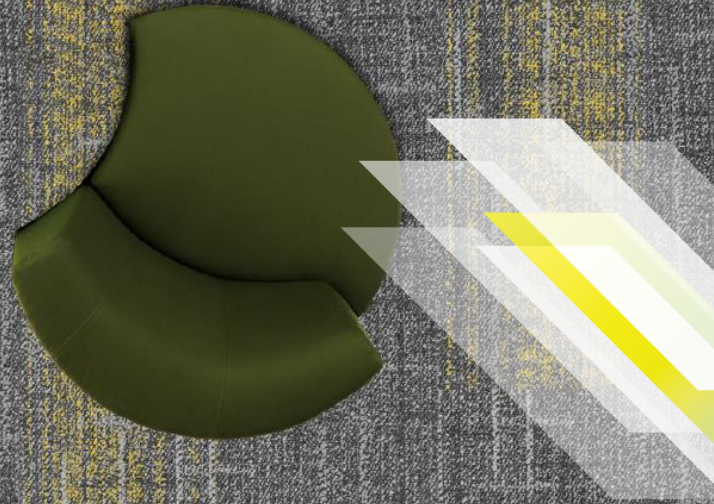
CITY - 2009-02, 2009-02+Gold, 2009-09,  
2009-09+Sapphire

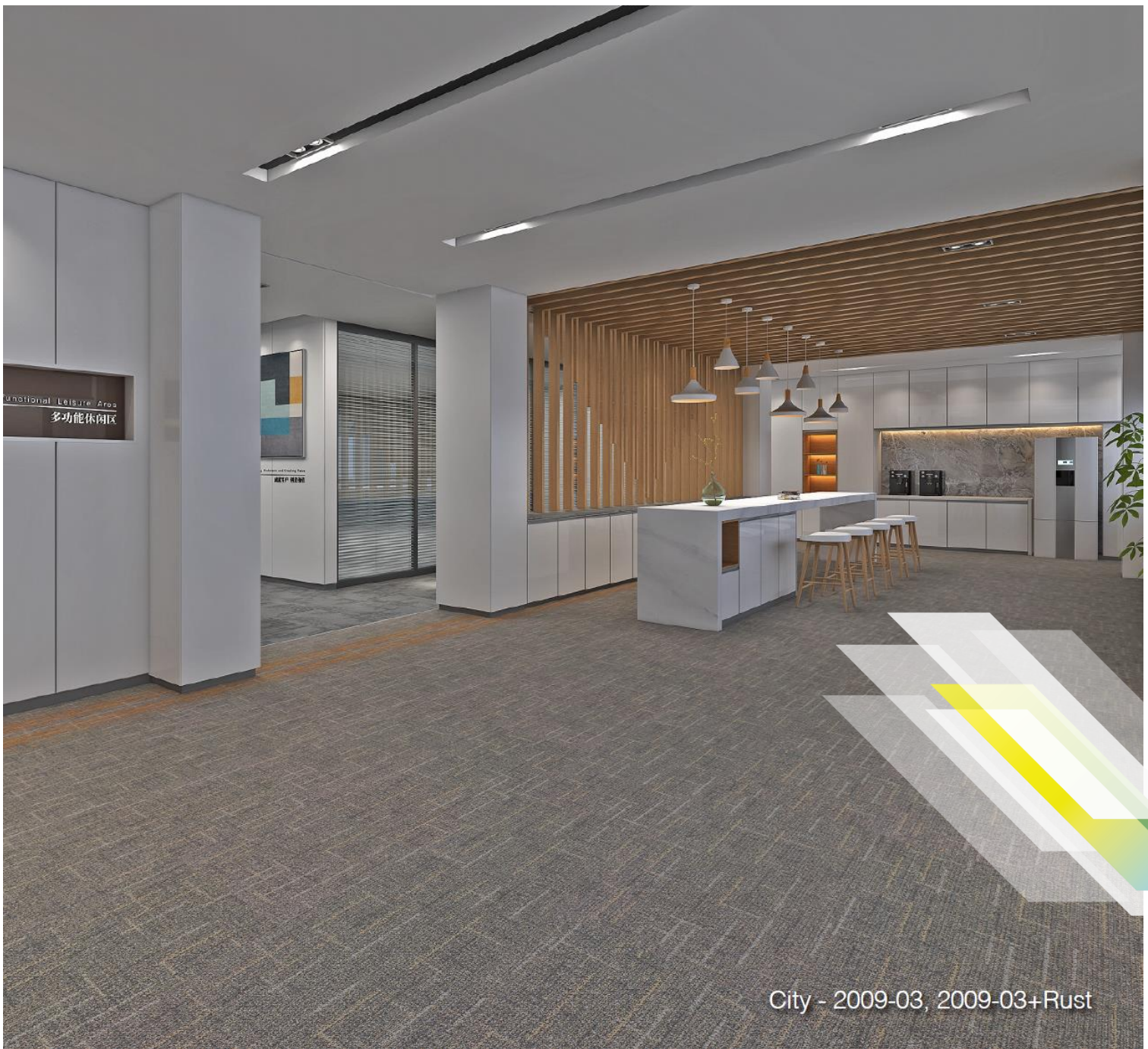


CITY - 2009-02, 2009-02+Gold, 2009-09,  
2009-09+Sapphire

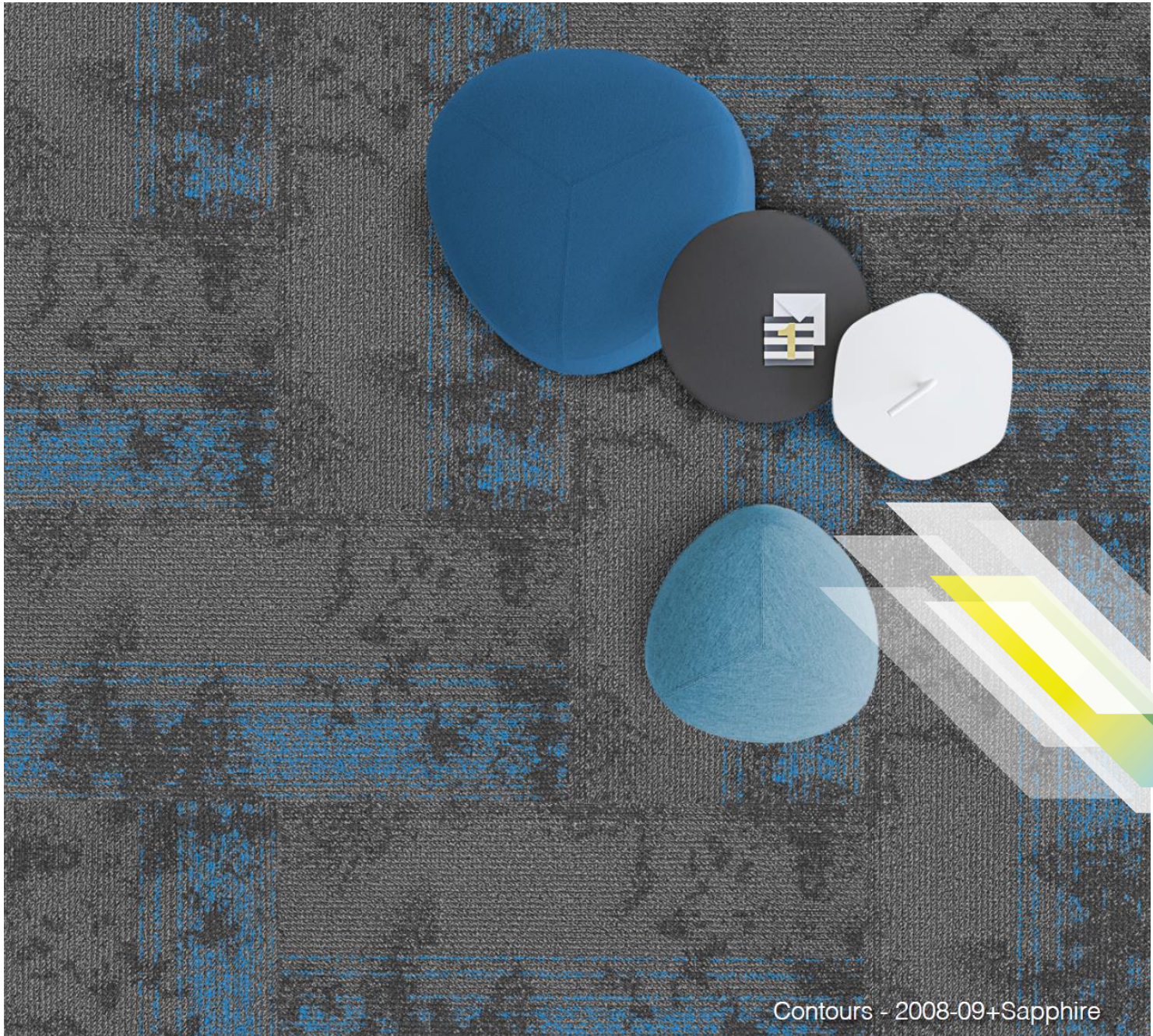


City - 2009-02, 2009-02+Gold, 2009-09, 2009-09+Sapphire





YOU  
*have to*  
CREATE  
*the*  
FUTURE

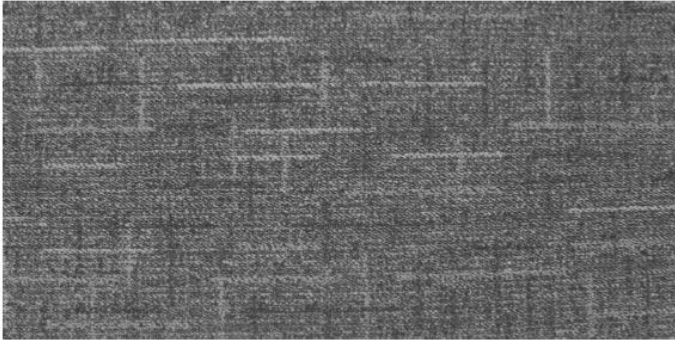




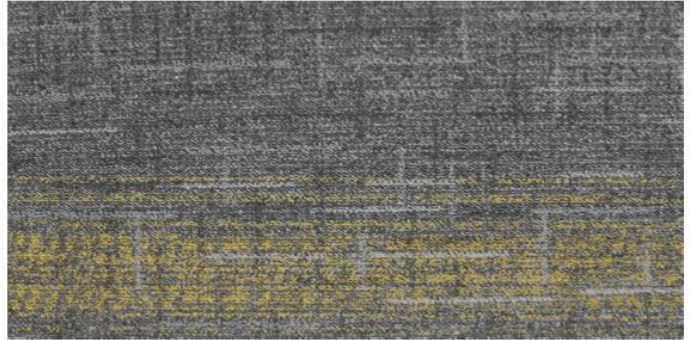




# City



2009-02



2009-02+Gold



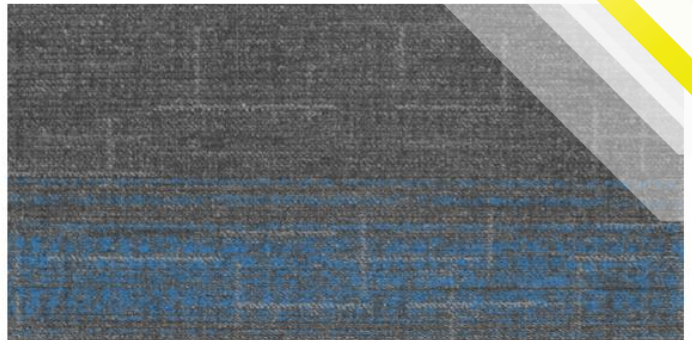
2009-03



2009-03+Rust

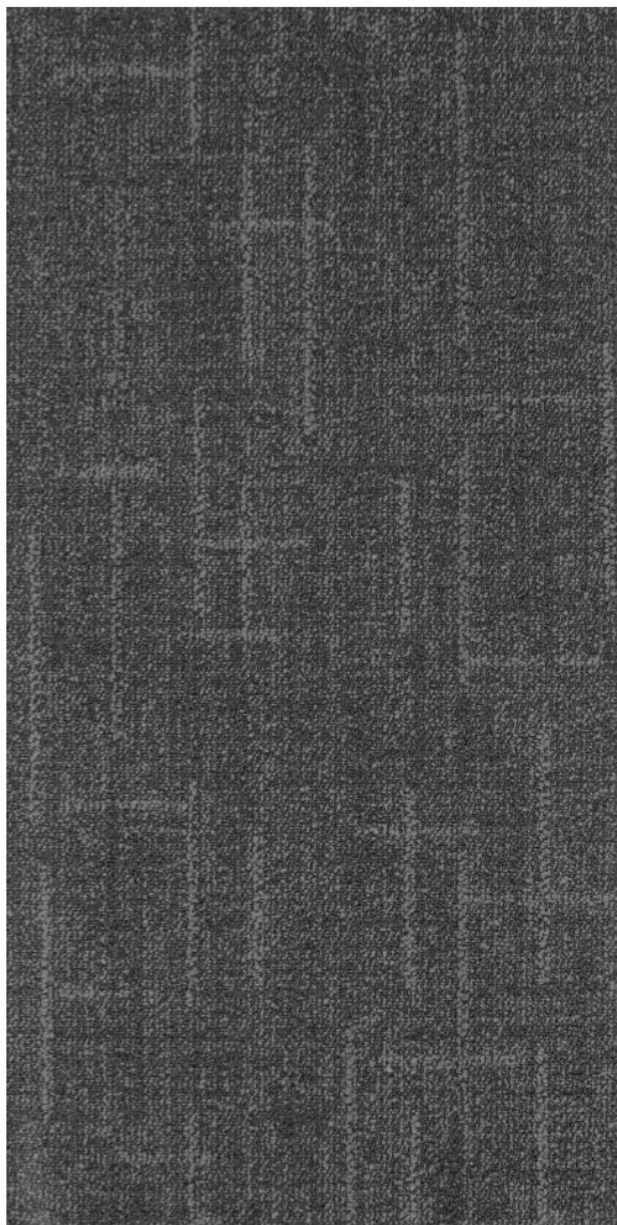


2009-09

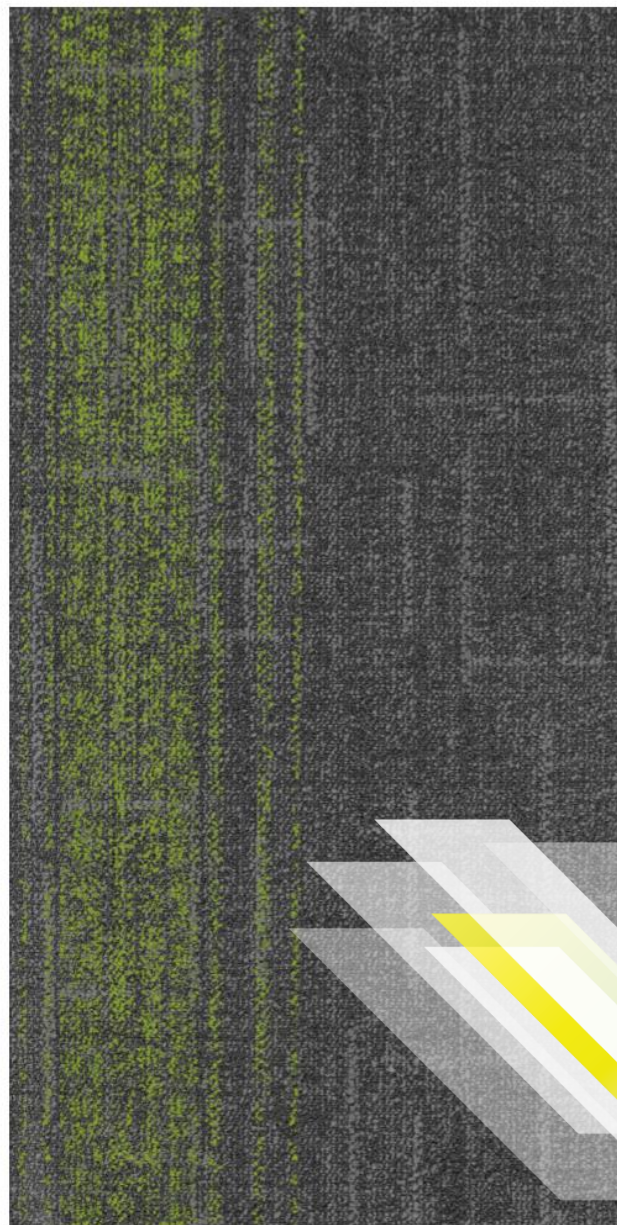


2009-09+Sapphire

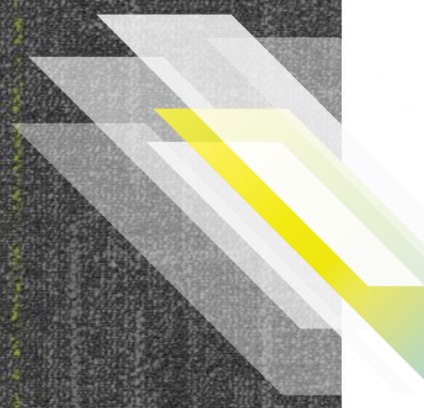
City



2009-13



2009-13+New Leaf



## Contours



2008-09



2008-09+Sapphire



2008-11



2008-11+Gold

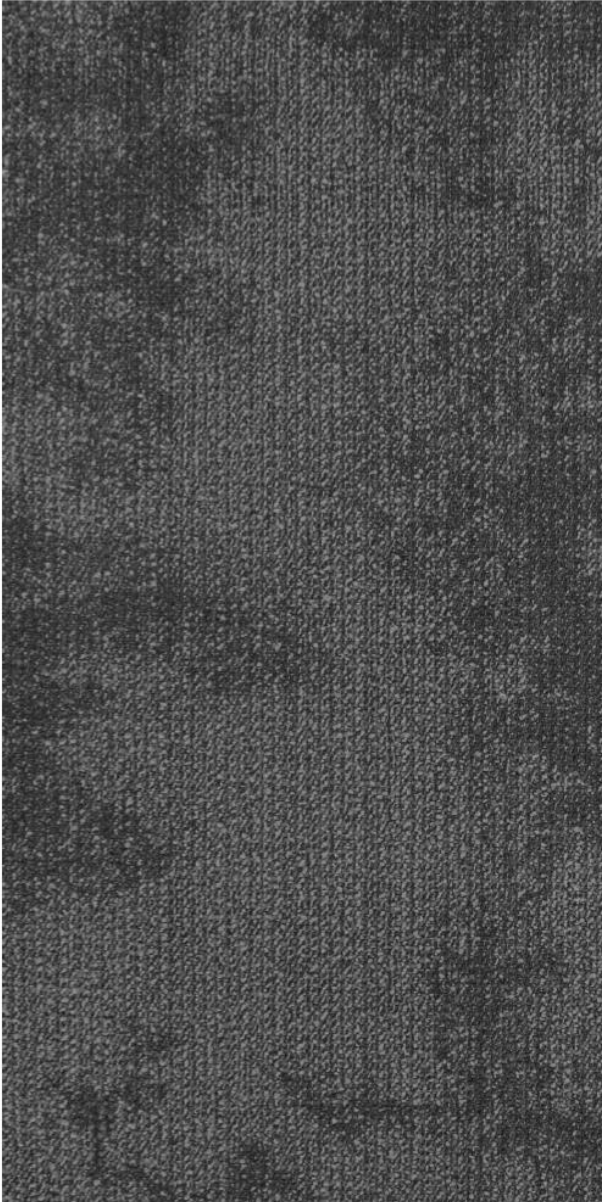


2008-12

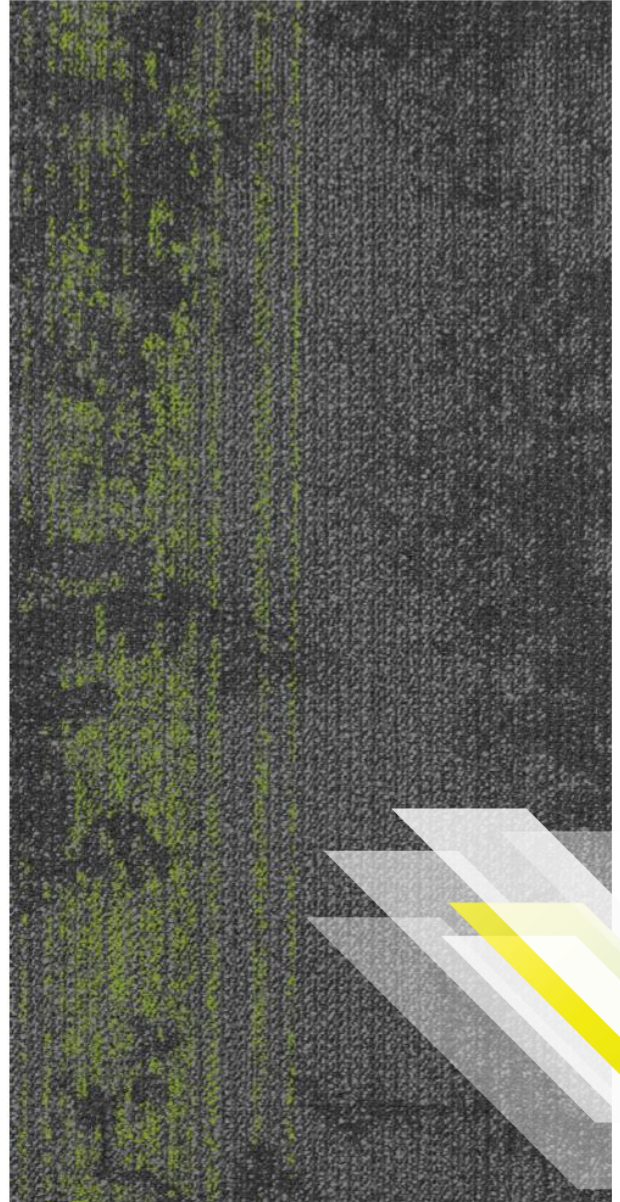


2008-12+Rust

## Contours



2008-13



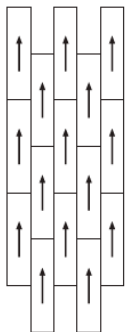
2008-13+New Leaf



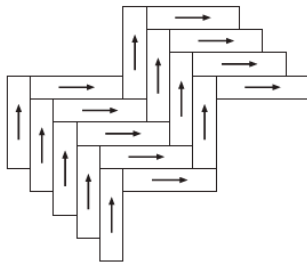
**Product Specifications :**

Construction	Texture tufted loop pile
Face Fiber	100% Nylon
Dyed Method	Solution dyed
Total Thickness	7.5 mm + / - 0.5 mm
Backing	<b>ECOTEC®</b> recycled backing
Fiber Treatment	Stain and soil protection
Tile Size	50 cm x 100 cm
Wear Classification	Heavy commercial
Flammability	≥ 0.45 (Class I)
Electrostatic Propensity	(AATCC 134) less than 3.5kv
Indoor Air Quality	Singapore Green Label

**Installation Methods :**



Ashlar



Herringbone

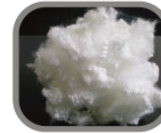
**Advantages :**

- Eco friendly, 100% recyclable.
- Absorbs foot impact and enhances carpet durability.
- Superior sound absorbency results in quieter environment.
- Enhances walking comfort and reduces leg fatigue.
- Clean indoor air quality.
- Superior dimensional stability.
- PVC Free, bitumen free.

**ECOTEC® Recycled Carpet Tile Backing :**



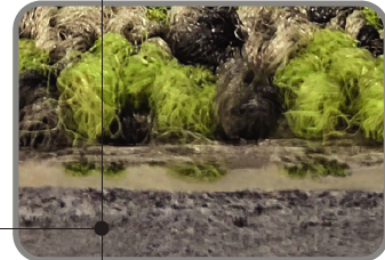
1. PET beverage bottles



2. regenerated into fiber



3. multi layer bonded into felt backing



● ECOTEC® recycled carpet backing

Specifications are based on average normal manufacturing tolerances, variations do not effect product performance.

As with all quality carpets , slight variations in color may occur from dye lot to dye lot.

Protective chair pads are recommended under office chairs with roller castors to preserve appearance retention and to avoid excessive wear.

For end of life disposal, please refer to your country's disposal regulation.



We do better

**HIQ Group Limited**

Unit 2209, Kodak House II,  
North Point, Hong Kong.  
香港北角柯達大廈2期2209室

[www.hiq-group.com](http://www.hiq-group.com)

[info@hiq-group.com](mailto:info@hiq-group.com)

+852 2575 8966

FB: HIQ Furniture

IG: hiq.officefurniture

Whatsapp: 9880 6262

